

- Company Overview
- Company Profile
- Company Services
- Facility Visual View
- Company Structure
- Company Products
- CAD Tools
- Quality Assurance
- Configuration Control
- InTalTech Customers



Facility: 400m²



Number of employees: 25

Engineer/Tech. Personnel: 80%

InTalTech is a Design Center providing **development, engineering, qualification and manufacturing services** for mechanical and electronic hardware projects.

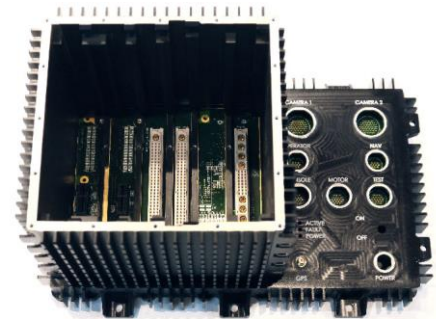
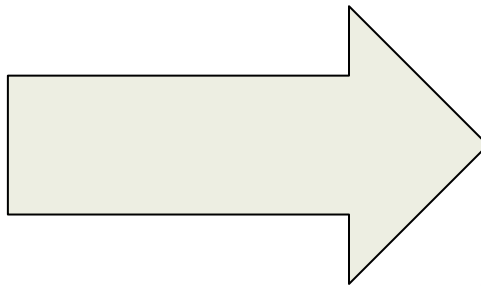
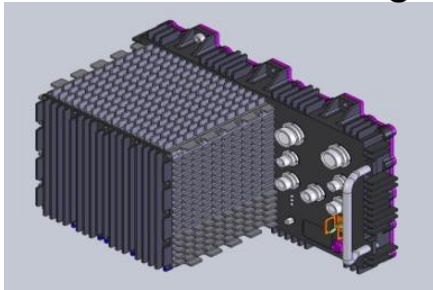
InTalTech Ltd develops and manufactures several lines of shelf and custom products for military, industrial and medical business markets:

- 1) **TBDock™ ToughBook** docking stations, with **Drop'N Lock™** Mechanism.
- 2) **MILCOMM™** communication products, with **U²™** Building Blocks.
- 3) **MILCONN™** connectivity solutions.

Whether you need a full project development or just an innovative solution to a specific design problem, InTalTech has the skills, experience and creativity to illuminate an "**out-of-the-box**" concept for you.

Design-to-Production Turnkey Services

InTalTech provides innovative turnkey solutions for mechanical and electronic products. The Product is taken from the infancy stage through the engineering process and finally brought to a mature working stage. The mature product is manufactured and supplied to the customer fully tested. The Design-to-Production Turnkey service is provided as a complete solution or as individual services, according to customer requirements.

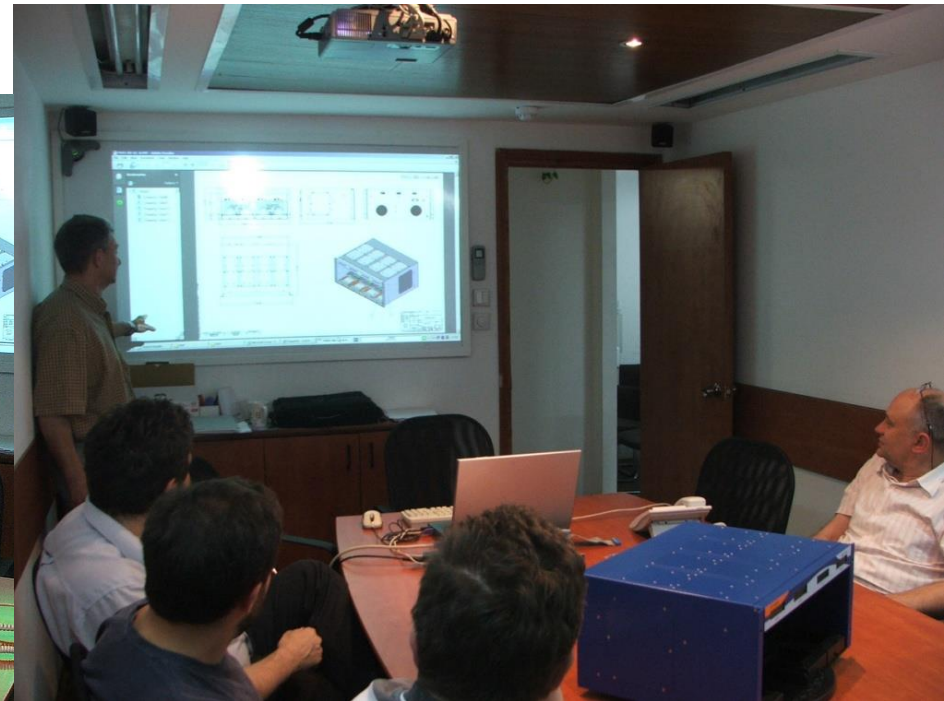
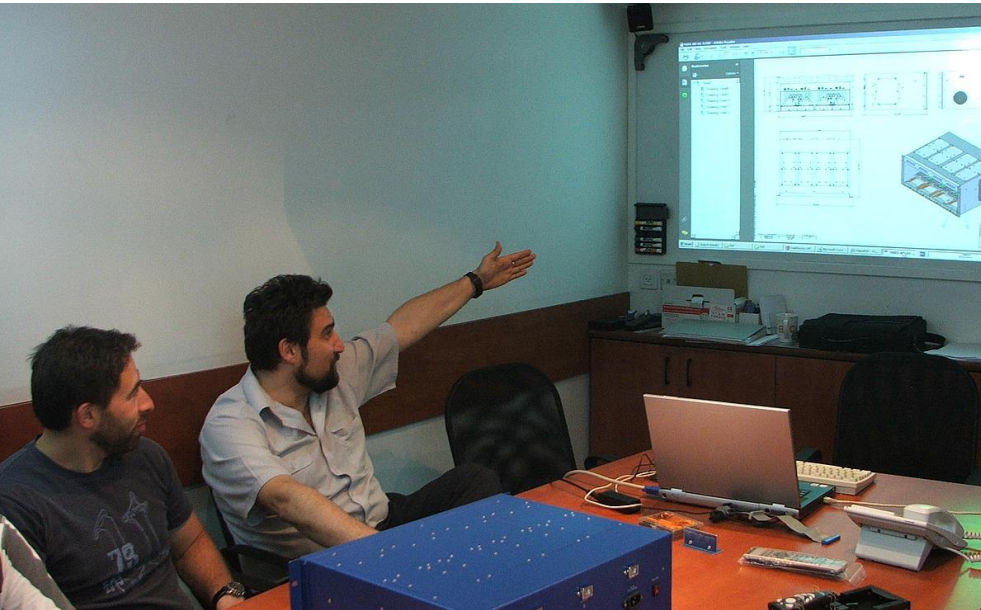


- Entrance & Reception



קומת קרקע
A.N.S Engineering
← אר.אי.אל מחשבים
← InTal
קומה א'
ביטוח אלעד-סב
DIGIDEX LTD.
GIDY
בר זון הנדסת אלקטר
כרמיאל הנדסה ובנייה
ארז ניהול פרויקטים
ליאון רוזמן
AMGINTEC

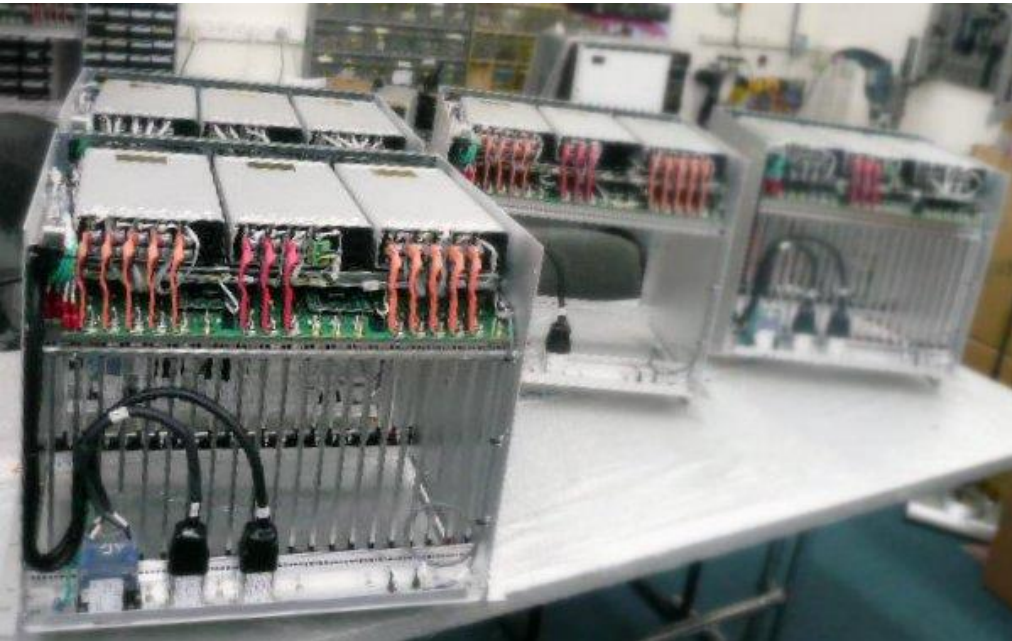
- Meeting Room



- **R&D Floor**



- Production Floor



- Production Floor



Engineering design services

- Cost reduction solutions
- Component engineering
- Design for manufacturing

Manufacturing services

- Prototype production
- Small to medium scale production
- Custom cables production

Manufacturing Qualification

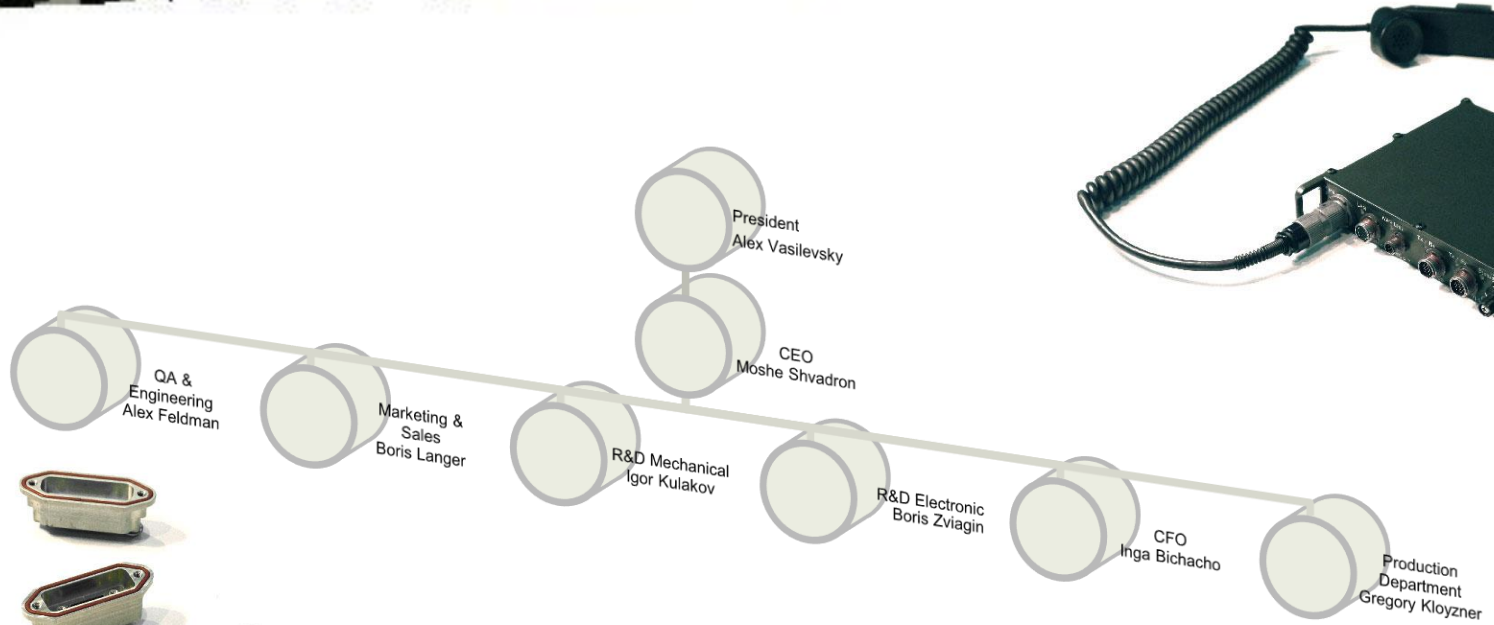
- EMC Qualification according to MIL-STD 461, STD 704, STD 1275
- Environmental Qualification according to MIL-STD-810

Mechanical design services

- Electronic packaging design
- Conductive cooling design
- Electro-mechanical design
- Shock absorption and vibration control

Electronic design services

- Digital high speed design
- Analog circuit design
- Power supply design
- PCB layout and manufacturing



- **TBDocK™ ToughBook Docking Stations**

TBDocK™ presents a revolutionary **DropN'Lock** mechanism; once your **ToughBook** is "dropped" you can be sure it is locked and fully functional while using it under the harshest environmental conditions.

The products are designed for airborne, naval and ground applications, while providing high-levels of performance and reliability in the harshest environments.

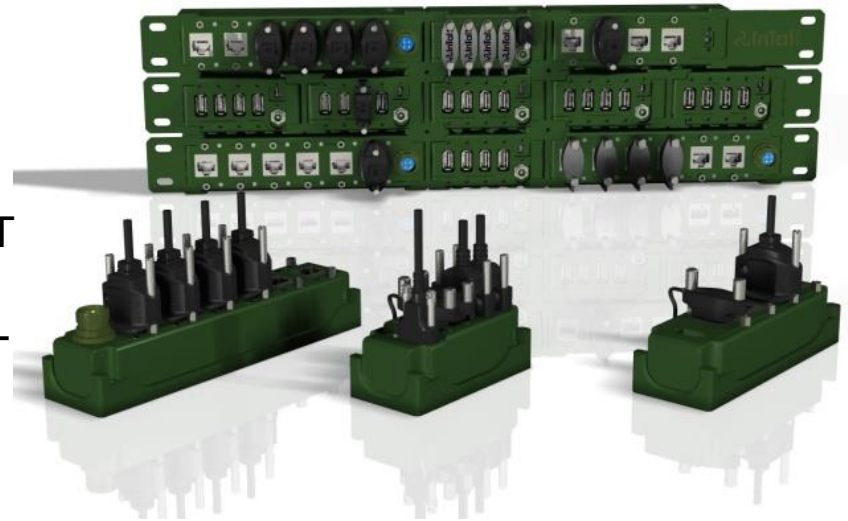


- **MILCOMM™ Communication Products**

InTalTech's **MILCOMM™** product line incorporates Rugged Military grade ETHERNET SWITCHES, ETHERNET-to-SERIAL, USB HUBS, USB-to-LAN, USB-to-SERIAL and USB-to-MIXED devices.

All these products are designed to provide high levels of performance and reliability in the harshest environments.

The units are easy-to-install **XU²™** modules fitting into a standard 19" 1U height rack slot as well as suitable, for direct mounting on vehicle or vessel.



- **MILCONN™ Connectivity Solutions**

InTalTech's **MILCONN™** line of rugged connectivity solutions provides the customer with accessories that convert commercial connectivity solutions

(RJ-45, USB, etc.) into industrial and military connectivity solutions.

In addition, InTalTech provides standard and customized Military BackShell's for Micro D-Type / Glenair 80X series / per customer Requirements...



Whether you need a total product development solution or an innovative answer to a specific design problem InTalTech has the skills, experience and creativity to unleash your product's potential.



QA - the activity of providing evidence needed to establish quality in work, and that activities that require good quality are being performed effectively. All those planned or systematic actions necessary to provide enough confidence that a product or service will satisfy the given requirements for quality.

InTalTech QA activities are based on:

- Incoming inspection of the purchased items and produced by MNF parts
- Final Testing at PCB and Unit levels
- Integration testing at System level
- Outgoing inspection of produced by InTalTech items
- **ISO 9001:2000 certification**

Manufacturing Resource Planning (MRP) attempt to integrate several data sources and processes of an organization into a unified system. A typical MRP system uses multiple components of computer software and hardware to achieve the integration. A key ingredient of most MRP systems is the use of a unified database to store data for the various system modules.

InTalTech configuration control is based on PC/MRP system, that allows every department of a company to store and retrieve information in real-time. Using a common database allows information to be more reliable, accessible, and easily shared.

This improves the business by adding functionality, mixing and matching programs from different vendors.

InTalTech supplies its services to a wide spectrum of the market. Our customers include leading hi-tech and bio-tech companies and various governmental bodies including the Israeli Defense Force.



Oridion

